

Stopping in an Intersection without Traffic Lights

Information for Motorists

Council officers patrol various locations across the region to regulate parking in accordance with the State Law.

Stopping in an Intersection without Traffic Lights

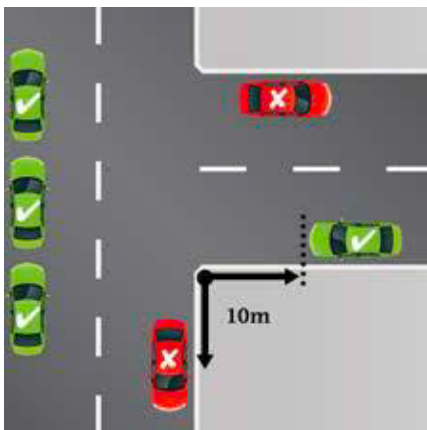
A driver must not stop on a road within 10m from the nearest point of an intersecting road at an intersection without traffic lights, unless the driver stops at a place on a length of road, or in an area, to which a parking control sign applies. If the intersection is a T-intersection, the driver may stop along the continuous side of the continuing road.

What if I park my vehicle incorrectly?

Council Parking Officers conduct regular patrols across the Shire to ensure the safety of cyclists, motorists, and pedestrians. Stopping in an intersection may result in a parking infringement being issued in accordance with the legislation to ensure public safety.

How can I report unlawful parking?

If you are concerned about a vehicle parked unlawfully, please contact Council and an officer will investigate the matter.



Transport Operations (Road Use Management—Road Rules) Regulation 2009

For more information

Visit: 9 Pelican Street, Tewantin

Email: mail@noosa.qld.gov.au

Call: (07) 5329 6500



Snap Send Solve



noosa.qld.gov.au