



NOTES

LEGEND

SURVEY DETAILS:
VERTICAL DATUM:
HORIZONTAL DATUM:

REVISION REGISTER					
-	-	-	-	-	-
-	-	-	-	-	-
-	-	-	-	-	-
-	-	-	-	-	-
-	-	-	-	-	-
-	-	-	-	-	-

REV	DATE	DESCRIPTION	BY	ENG	APP
-----	------	-------------	----	-----	-----

International Coastal Management

POST PO Box 306, Main Beach LPO, Main Beach QLD, 4217, Australia

TELEPHONE +61 7 55640564 FAX +61 7 55329147

WEBSITE www.coastalmanagement.com.au

PROJECT NAME

Noosa River Oyster Restoration

DRAWING TITLE

Cover

DRAWING No:

NROR-AC-001

DRAWN: SK

CHECKED: BC

APPROVED: AJ

DATE: 13.10.2022

SCALE: As Shown

SHEET No: 1 OF 5

RPEQ 2876

A3

Noosa River Oyster Restoration Project

PHASE 1 - AS CONSTRUCTED DRAWINGS

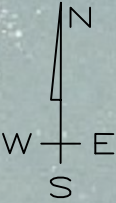
SCHEDULE OF DRAWINGS			
DRAWING No.	DRAWING TITLE	DATE	REVISION No.
NROR-AC-001	Cover	12/10/2022	-
NROR-AC-002	Tewantin As-Constructed	12/10/2022	-
NROR-AC-003	Goat Island As-Constructed	12/10/2022	-
NROR-AC-004	Noosa Sound West As-Constructed	12/10/2022	-
NROR-AC-005	Noosa Sound East As-Constructed	12/10/2022	-



NAV AID	Easting	Northing
TEW-1	504156.6	7080821.8
TEW-2	504111.4	7080923.8

Point	Easting	Northing
A	504143.8	7080822.5
30m distance from boat		
B	504157.2	7080824.7
C	504167.3	7080839.2
Extent of rocky rubble		
D	504153.5	7080881.8
E	504127.4	7080891.6
F	504129.3	7080902.0
Extent of rocky rubble		
G	504117.6	7080922.3
H	504109.5	7080919.9
10m distance from seagrass		
I	504096.7	7080913.6
MHWS/Vegetation		

SUBMARINE CABLE LOCATION
Surveyed by Accurate Service Locators



LOCALITY PLAN



NOTES

- Drawing Data:
 - Aerial image, M&J Marine Photogrammetry October 2022 with regional image from Nearmap 29/10/2020.
 - Bathymetric Survey, Northgroup Consulting Jan 2021.
 - Reef patch locations determined from UAV photogrammetry undertaken by M&J Marine and processed by ICM.
 - Crest elevations from ICM survey 21/9/2022 and extracted from UAV Photogrammetry.
 - Navigation Aid locations provided by M&J Marine.
 - Submarine cable located on-site by Accurate Service Locators using ground penetrating radar to be >5m north of setout point F and point H.
- Restoration Footprint.
 - Shoreline extent defined by setout points from approved restoration plans. Setout points have been transformed from GDA94 to GDA2020.
- Reef Patches.
 - Based on design module 2 & 3. Refer Drawing NROR-2021-02.
 - Minor layout modifications have been adopted in response to changes to location of mangroves, vegetation and marine plants on site (including dead trees). These modifications are in line with design principles outlined in Drawing NROR-2021-02.
 - Reef patches T1 & T2 have a composite substrate of rock and cured oyster shell.
 - Total area of rock placed 439m²
 - Total shoreline length of restoration area 104m.

LEGEND

- OYSTER REEF PATCH
- RESTORATION FOOTPRINT
- RP BOUNDARY
- MHWS
- 1m MLWS
- CREST LEVEL (m AHD)
- NAVIGATION AID

SURVEY DETAILS: M&J Marine OCT22

VERTICAL DATUM: m AHD

HORIZONTAL DATUM: GDA2020/56

REVISION REGISTER

-	-	-	-	-	-
-	-	-	-	-	-
-	-	-	-	-	-
-	-	-	-	-	-
-	-	-	-	-	-
-	-	-	-	-	-

REV DATE DESCRIPTION BY ENG APP



International
Coastal
Management

POST PO Box 306, Main Beach LPO, Main Beach QLD, 4217, Australia
TELEPHONE +61 7 55640564 FAX +61 7 55329147
WEBSITE www.coastalmanagement.com.au

PROJECT NAME

Noosa River Oyster
Restoration

DRAWING TITLE

Tewantin As-Constructed

DRAWING No:

NROR-AC-002

DRAWN: SK

CHECKED: BC

APPROVED: AJ

DATE:

SCALE:

SHEET No:

RPEO 2876

13.10.2022

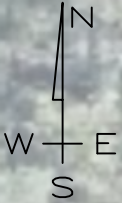
As Shown

2 OF 5

A3

NAV AID	Easting	Northing
GI-1	504792.2	7080564.6
GI-2	504848.2	7080573.8

Point	Easting	Northing
A	504794.0	7080576.7
2m distance from mangroves		
B	504792.8	7080571.4
C	504793.7	7080564.4
1m Seaward of -1m MLWS		
D	504849.6	7080572.8
10m distance from seagrasses		
E	504852.7	7080583.0
F	504852.5	7080586.1
MHWS/Vegetation		



LOCALITY PLAN



NOTES

- Drawing Data:
 - Aerial image, M&J Marine Photogrammetry September 2022 with regional image from Nearmap 29/10/2020.
 - Bathymetric Survey, Northgroup Consulting Jan 2021.
 - Reef patch locations determined from UAV photogrammetry undertaken by M&J Marine and processed by ICM.
 - Crest elevations from ICM survey 21/9/2022 and extracted from UAV Photogrammetry.
 - Navigation Aid locations provided by M&J Marine.
- Restoration Footprint.
 - Shoreline extent defined by setout points from approved restoration plans. Setout points have been transformed from GDA94 to GDA2020.
- Reef Patches.
 - Based on design module 2 & 3. Refer Drawing NROR-2021-02.
 - Minor layout modifications have been adopted in response to changes to location of mangroves, vegetation and marine plants on site (including dead trees). These modifications are in line with design principles outlined in Drawing NROR-2021-02.
 - Total area of rock placed 244m²
 - Total shoreline length of restoration area 56m.

LEGEND

- OYSTER REEF PATCH
- RESTORATION FOOTPRINT
- RP BOUNDARY
- MHWS
- 1m MLWS
- CREST LEVEL (m AHD)
- NAVIGATION AID

SURVEY DETAILS: M&J Marine SEP22
VERTICAL DATUM: m AHD
HORIZONTAL DATUM: GDA2020/56

REVISION REGISTER

-	-	-	-	-	-
-	-	-	-	-	-
-	-	-	-	-	-
-	-	-	-	-	-
-	-	-	-	-	-
-	-	-	-	-	-

REV DATE DESCRIPTION BY ENG APP



POST PO Box 306, Main Beach LPO, Main Beach QLD, 4217, Australia
TELEPHONE +61 7 55640564 FAX +61 7 55329147
WEBSITE www.coastalmanagement.com.au

PROJECT NAME

Noosa River Oyster Restoration

DRAWING TITLE

Goat Island As-Constructed

DRAWING No:

NROR-AC-003

DRAWN: SK

CHECKED: BC

APPROVED: AJ

DATE:

SCALE:

SHEET No:

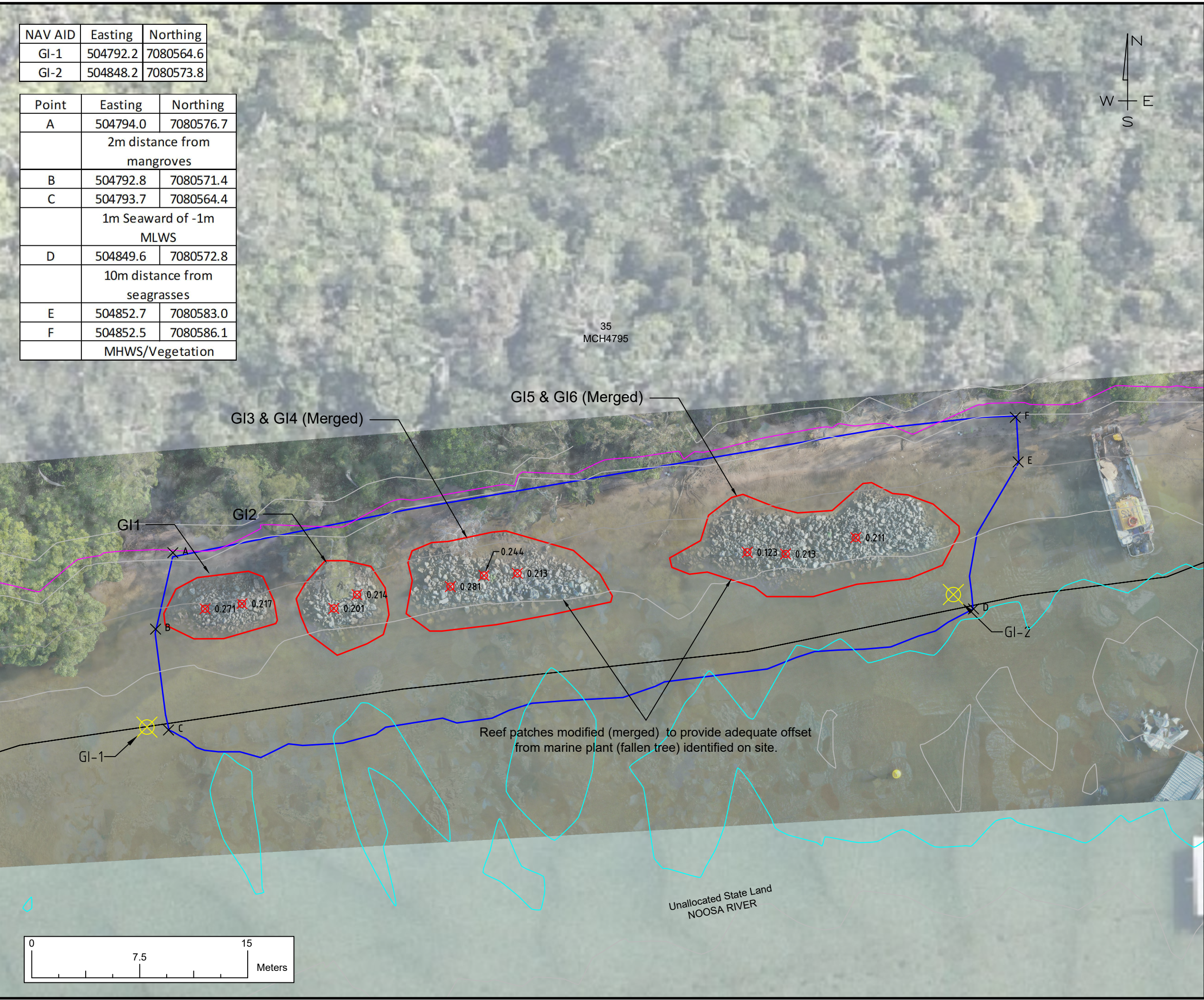
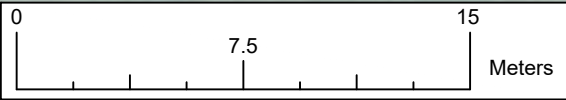
RPEO 2876

13.10.2022

As Shown

3 OF 5

A3



NAV AID	Easting	Northing
NSW-1	508167.6	7080739.0
NSW-2	508259.7	7080769.2

Point	Easting	Northing
A	508169.1	7080729.4
B	508168.3	7080733.3
1m Seaward of -1m		
C	508256.1	7080757.3
D	508260.5	7080744.5
MHWS/Vegetation		

LOCALITY PLAN



NOTES

- Drawing Data:
 - Aerial image, M&J Marine Photogrammetry September 2022 with regional image from Nearmap 29/10/2020.
 - Bathymetric Survey, Northgroup Consulting Jan 2021.
 - Reef patch locations determined from UAV photogrammetry undertaken by M&J Marine and processed by ICM.
 - Crest elevations from ICM survey 21/9/22 & 27/9/22, and extracted from UAV photogrammetry.
 - Navigation Aid locations provided by M&J Marine.
- Restoration Footprint.
 - Shoreline extent defined by setout points from approved restoration plans. Setout points have been transformed from GDA94 to GDA2020. Seaward extent near NSW4&5 adjusted to reflect additional survey data collected prior to commencement of works.
- Reef Patches.
 - Based on design module 3. Refer Drawing NROR-2021-02.
 - Minor layout modifications have been adopted in response to changes to location of mangroves, vegetation and marine plants on site (including dead trees). These modifications are in line with design principles outlined in Drawing NROR-2021-02.
 - Total area of rock placed 600m²
 - Total shoreline length of restoration area 92m.

LEGEND

- OYSTER REEF PATCH
- RESTORATION FOOTPRINT
- RP BOUNDARY
- MHWS
- 1m MLWS
- CREST LEVEL (m AHD)
- NAVIGATION AID

SURVEY DETAILS: M&J Marine SEP22
VERTICAL DATUM: m AHD
HORIZONTAL DATUM: GDA2020/56

REVISION REGISTER

-	-	-	-	-	-
-	-	-	-	-	-
-	-	-	-	-	-
-	-	-	-	-	-
-	-	-	-	-	-
-	-	-	-	-	-

REV DATE DESCRIPTION BY ENG APP



International Coastal Management
POST PO Box 306, Main Beach LPO, Main Beach QLD, 4217, Australia
TELEPHONE +61 7 55640564 FAX +61 7 55329147
WEBSITE www.coastalmanagement.com.au

PROJECT NAME

Noosa River Oyster Restoration

DRAWING TITLE

Noosa Sound West As-Constructed

DRAWING No:

NROR-AC-004

DRAWN: SK

CHECKED: BC

APPROVED: AJ

DATE:

SCALE:

SHEET No:

RPEO 2876

13.10.2022

As Shown

4 OF 5

A3

NAV AID	Easting	Northing
NSE-1	508805.9	7081018.6
NSE-2	508567.8	7080941.4

Point	Easting	Northing
A	508576.9	7080931.9
B	508576.1	7080936.5
1m Seaward of -1m MLWS		
C	508807.6	7081010.2
D	508811.2	7081003.5
MHWS/Vegetation		

LOCALITY PLAN



NOTES

- Drawing Data:
 - Aerial image, Nearmap 29/10/2020, M&J Marine Photogrammetry September 2022 & October 2022.
 - Bathymetric Survey, Northgroup Consulting Jan 2021.
 - Reef patch locations determined from UAV photogrammetry undertaken by M&J Marine and processed by ICM.
 - Crest elevations surveyed by ICM 21/9/22 & 27/9/22.
 - Navigation Aid locations provided by M&J Marine.
- Restoration Footprint.
 - Shoreline extent defined by setout points from approved restoration plans. Setout points have been transformed from GDA94 to GDA2020.
- Reef Patches.
 - Based on design module 3. Refer Drawing NROR-2021-02.
 - Minor layout modifications have been adopted in response to changes to location of mangroves, vegetation and marine plants on site (including dead trees), and locations of foreshore access. These modifications are in line with design principles outlined in Drawing NROR-2021-02.
 - Total area of rock placed 985m².
 - Total shoreline length of restoration area 245m.

LEGEND

- OYSTER REEF PATCH
- RESTORATION FOOTPRINT
- RP BOUNDARY
- MHWS
- 1m MLWS
- CREST LEVEL (m AHD)
- NAVIGATION AID

SURVEY DETAILS: M&J Marine SEP22
VERTICAL DATUM: m AHD
HORIZONTAL DATUM: GDA2020/56

REVISION REGISTER

REV	DATE	DESCRIPTION	BY	ENG	APP
-	-	-	-	-	-
-	-	-	-	-	-
-	-	-	-	-	-
-	-	-	-	-	-
-	-	-	-	-	-
-	-	-	-	-	-

REV DATE DESCRIPTION BY ENG APP



POST PO Box 306, Main Beach LPO, Main Beach QLD, 4217, Australia
TELEPHONE +61 7 55640564 FAX +61 7 55329147
WEBSITE www.coastalmanagement.com.au

PROJECT NAME

Noosa River Oyster Restoration

DRAWING TITLE

Noosa Sound East As-Constructed

DRAWING No:

NROR-AC-005

DRAWN: SK

CHECKED: BC

APPROVED: AJ

DATE:

SCALE:

SHEET No:

RPEO 2876

13.10.2022

As Shown

5 OF 5

A3