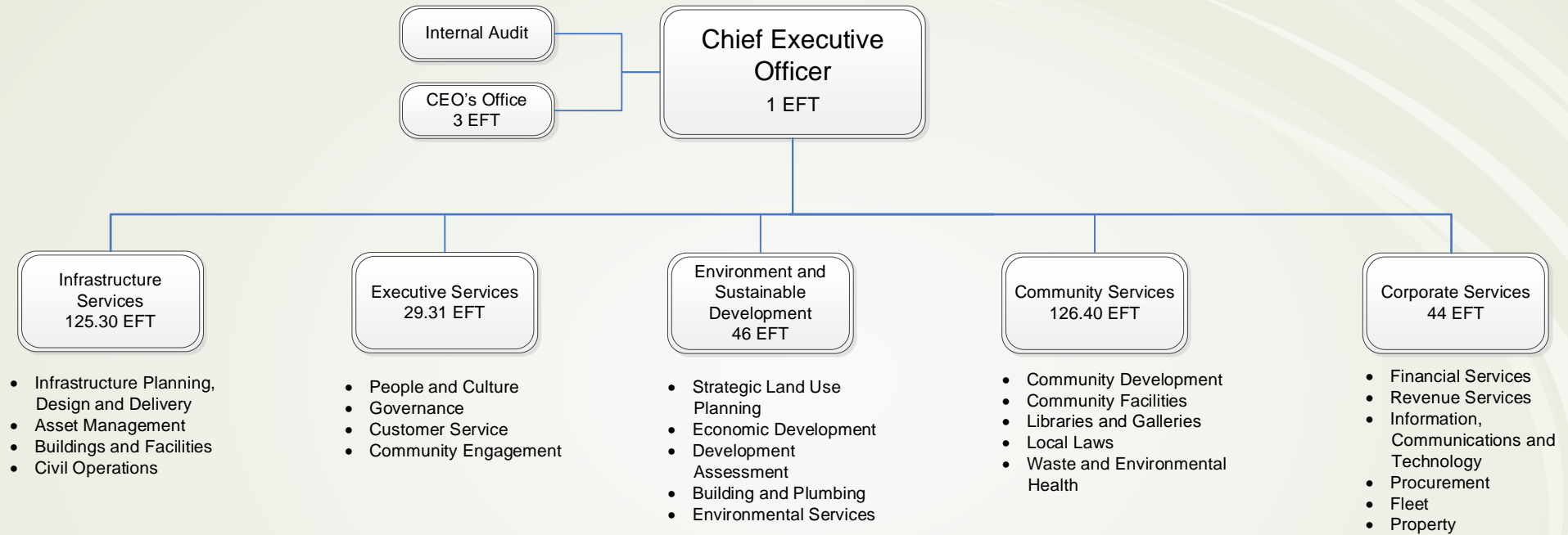


# Functions

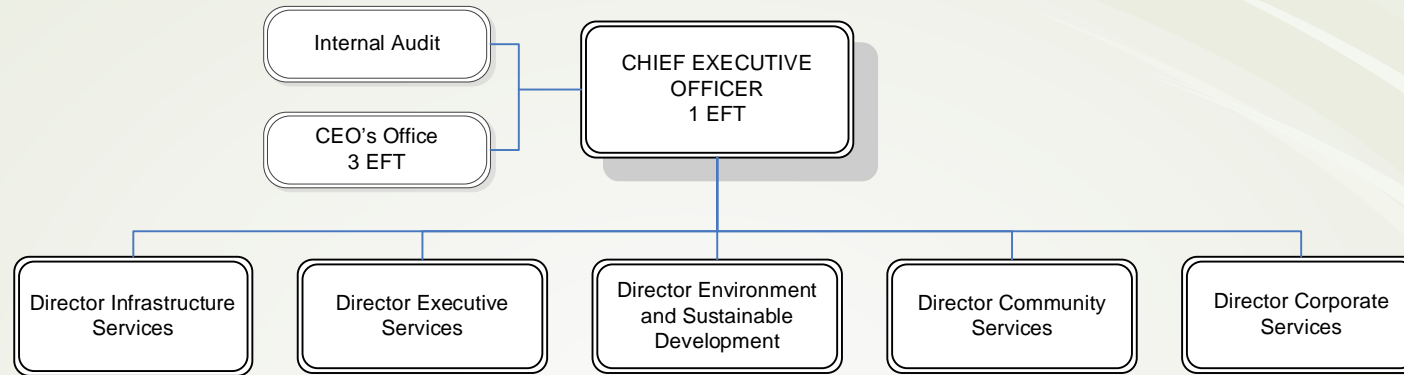
**TOTAL EFT – 375.01**



**Note – Fixed term appointments approved by Council are not included within the EFT totals as shown on this structure. Further details are available on the individual branch/team structures.**

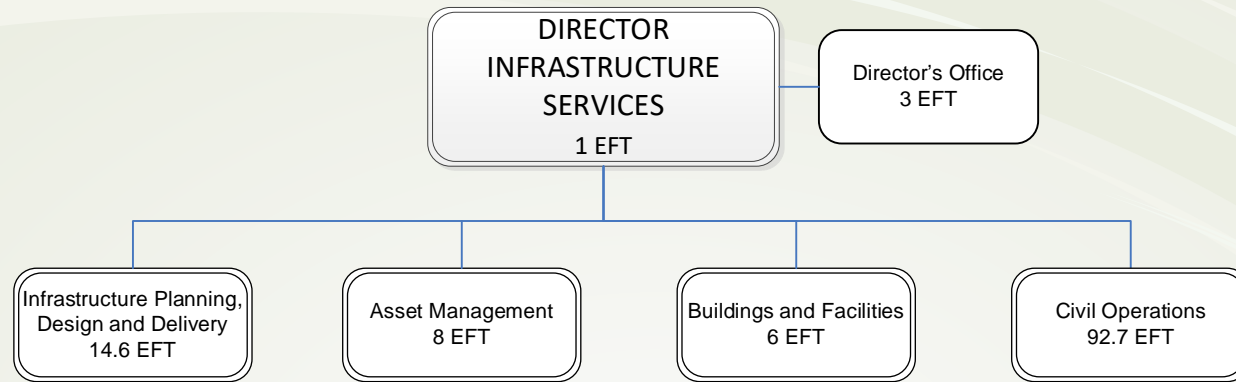
# Management

---



# Infrastructure Services

---

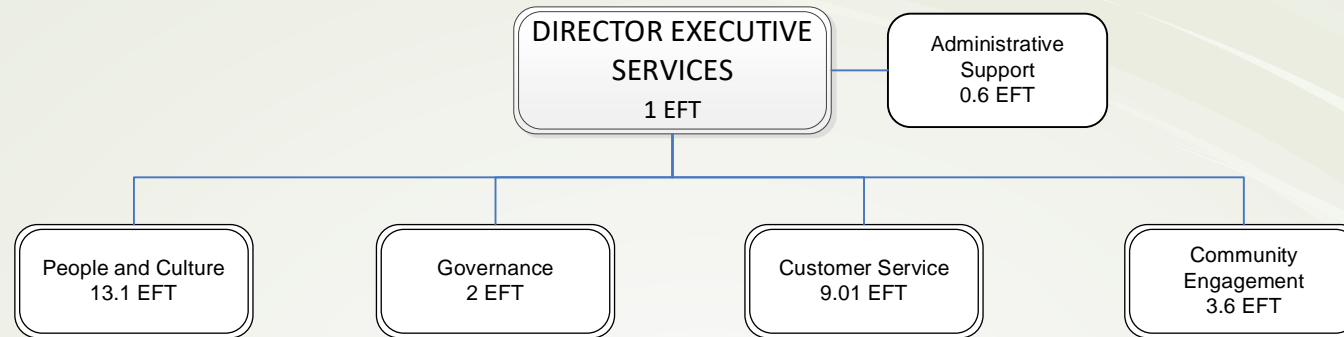


**Note – Fixed term appointments approved by Council are not included within the EFT totals as shown on this structure. Further details are available on the individual branch/team structures.**

**Total EFT: 125.30**

# Executive Services

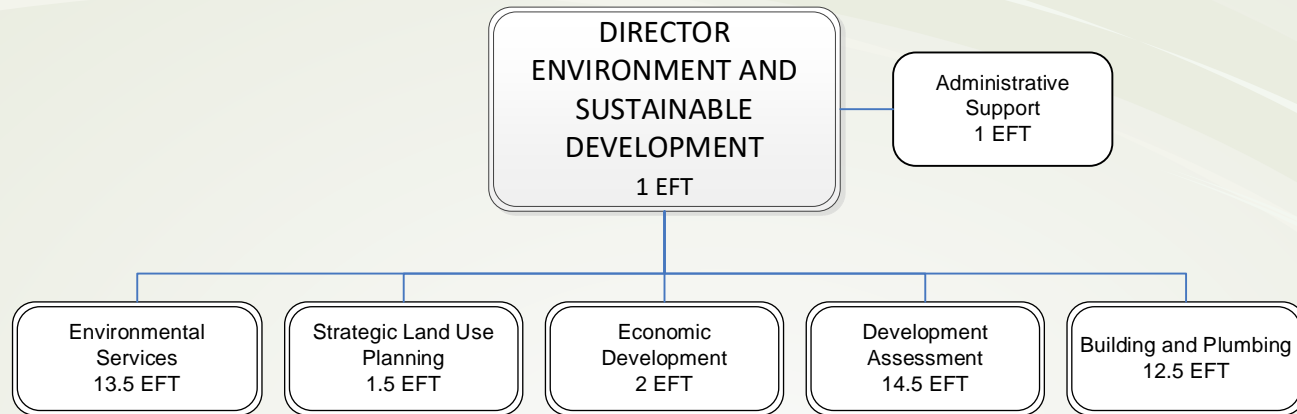
---



**Note – Fixed term appointments approved by Council are not included within the EFT totals as shown on this structure. Further details are available on the individual branch/team structures.**

**Total EFT: 29.31**

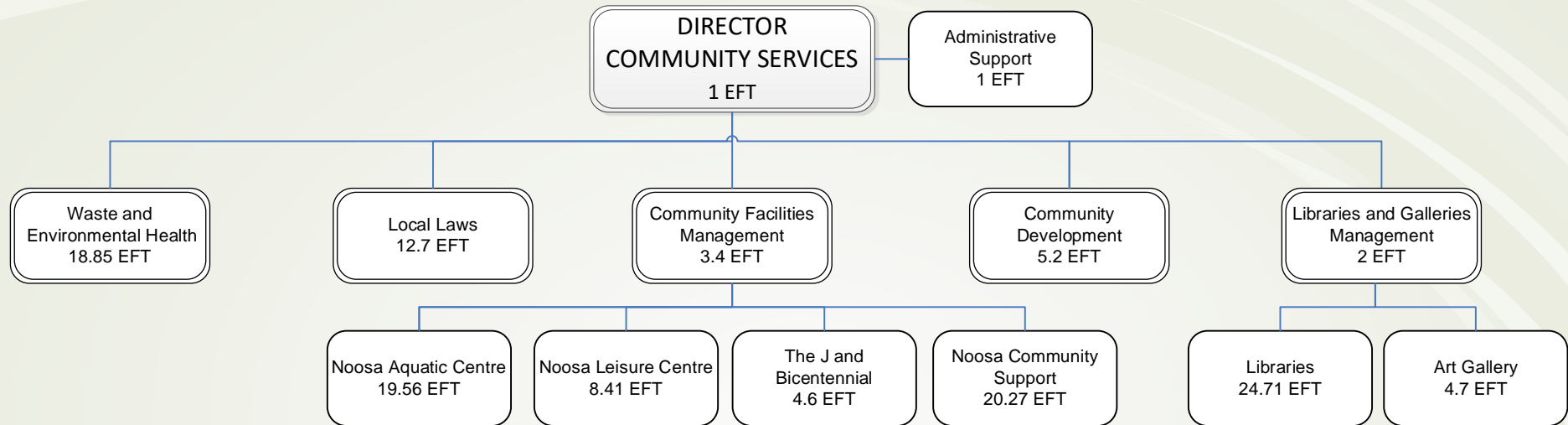
# Environment and Sustainable Development



Note – Fixed term appointments approved by Council are not included within the EFT totals as shown on this structure. Further details are available on the individual branch/team structures.

**Total EFT: 46**

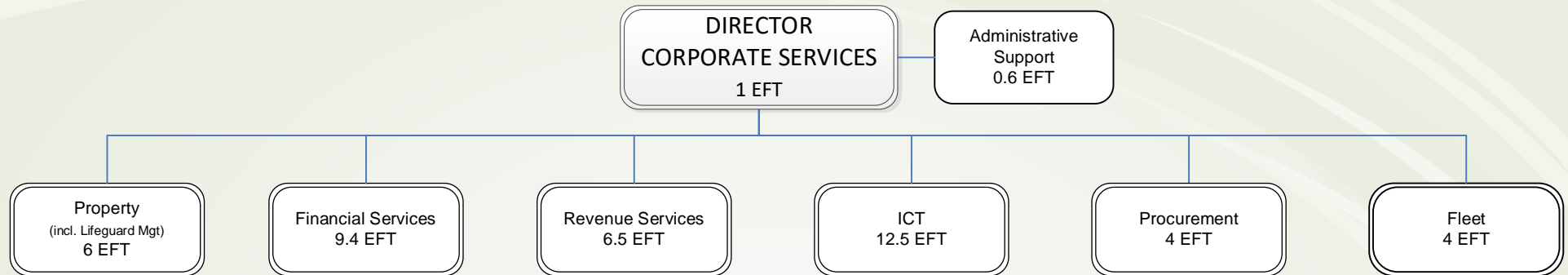
# Community Services



Note – Fixed term appointments approved by Council are not included within the EFT totals as shown on this structure. Further details are available on the individual branch/team structures.

**Total EFT: 126.40**

# Corporate Services



Note – Fixed term appointments approved by Council are not included within the EFT totals as shown on this structure. Further details are available on the individual branch/team structures.

**Total EFT: 44**