

Coronavirus (COVID-19)

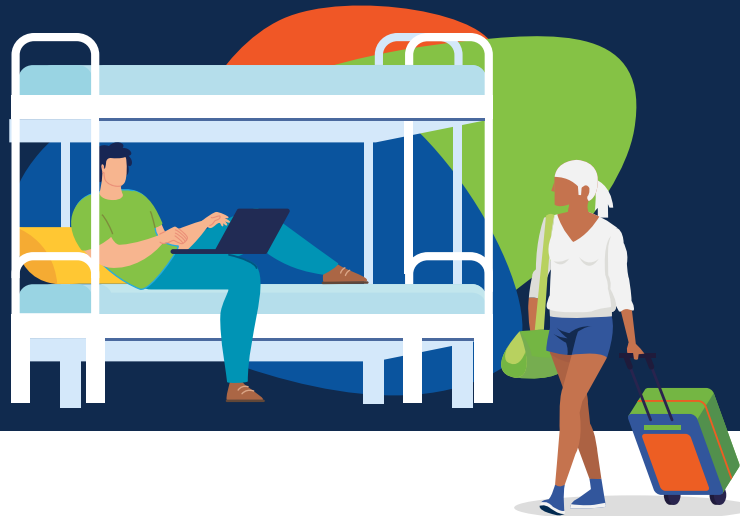
Non-essential Business, Activity and Undertaking Closure Direction (No.10)



Stage 1 Easing of restrictions for residential facilities

From 16 May 2020

There will be easing of restrictions (Stage 1) for operating or managing a residential facility in Queensland.



Hostels, bed and breakfasts, backpackers and boarding houses

Short term rental or accommodation

Caravans and camping parks

Holiday stays



Holiday Stays – Within the Outback (for Outback residents)



OPEN TO:

Permanent residents



Temporary residents who don't have permanent accommodation (e.g. backpackers)



Workers of the facility



People requiring interim accommodation if their place of residence is not available



People required to self-quarantine or self-isolate under a Direction



People away from their principal place of residence for a permitted purpose (e.g. seasonal worker, health practitioner)



Health management plan required

(unless operating solely for permanent residents)



(for facilities that offer shared facilities e.g. shared kitchen and bathroom)

Further information

Visit www.health.qld.gov.au/coronavirus or call **13 HEALTH** (13 43 25 84)



Queensland Government